



# Sligo County Childcare Committee

## Christmas Newsletter 2021

### *A note from Joan*

Hello to everyone

As we come to the end of another challenging year with many changes along the way, I want to express my appreciation to everyone for all their co operation throughout the year.

As a sector there has been many challenges to maintain the different areas of compliance, ranging from completing re registrations process with Tusla to keeping abreast of the growing range of paperwork and information that is requested from you and your settings to remain compliant. The professional approach taken to meet all these challenges and keep providing a quality service to the children and their families using your settings is astounding.

2022 will see the start of more change for you and your settings with announcements in Budget 2022 which included a revised funding model. Also, the recent publication of Nurturing Skills: The Workforce Development Plan for Early Learning and Care and School Age Childcare 2022 – 2028, 12 Month Review on National Childcare Scheme and the OECD Strengthening Early Childhood Education and Care in Ireland, outlines plans for the development of the Early Learning and Care and School Age Childcare sector going forward.

SCCC has seen some staff changes during 2021 with the secondment of Sharon into the Department of Children Equality Disability Integration and Youth as the National Childminding Co Ordinator. We wish Sharon well in her new post and look forward to the developments of the different actions of the National Action Plan for Childminders which has already started and with more starting to come to life in 2022.

We have welcomed Claire Molloy onto the team as Support and Development Worker. Claire has come into SCCC with several years of experience both in Ireland and abroad.

SCCC is also bidding a very sad farewell to Viola, who is retiring from SCCC on 31<sup>st</sup> December 2021. On behalf of everyone in SCCC we wish Viola a long and healthy retirement that is filled with new activities, fun and happiness.

On behalf of the Board of Directors and everyone at SCCC I would like to thank you for your ongoing co-operation and supports and to wish everyone a very safe, healthy and Happy Christmas.

### Inside this Newsletter

- Pg1. A word from Joan
- Pg2. Childminders Network
- Pg3. Children First Awareness
- Pg3. Early Years Education Inspection Programme
- Pg4 Advertising/Webinar & Ecce Minimum Exemption
- Pg4. ECCE payment schedule
- Pg5. NCS & CCSP maintenance
- Pg6. NCS & CCSP continued
- Pg7. AIM information
- Pg8. Compliance
- Pg9. Tusla information & Ecce Payment schedule
- Pg10. Aistear
- Pg11. First 5 Little Library initiative
- Pg11. First 5, investing in Children
- Pg12. Grants
- Pg13. Meitheal Co-ordinator
- Pg14. Parent Hub Co Ordinator
- Pg15. Workplace Experience Programme
- Pg16. Recent Publications
- Pg17. Contact details
- Pg18. Well wishes

#### **Acting Manager**

Joan McGrath

#### **Development Team**

Viola Craig & Claire Molloy

#### **Meitheal Coordinator**

Karen Folan

#### **Parent Hub Coordinator**

Lisa Nickolson

#### **Administration**

Suzanne Scanlon

Laura Norman

#### **Reception**

Barry Sullivan & Roisin McBreen



# Childminders Network—Sligo

## 3rd November, 2021

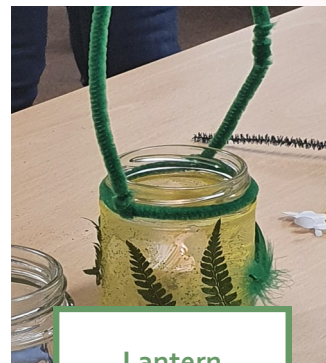
In response to requests from the childminders, on the 3rd November a group of our Childminders had their first Face to Face meeting in a very long time. Sligo CCC hosted an Arts & Crafts session in The Education Centre. This was facilitated by our very own childminder Trisha MacLaughlin.

Trisha focused on the use of recycled items, items from Nature and we had a seasonal theme going as well in preparation for Christmas.

We were also delighted to be in a position to provide a lovely resource pack to those who attended the session.

So ... they always say a picture paints a thousand words—and here are some examples of what we did on the night.

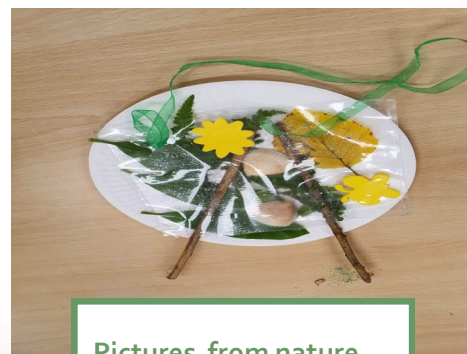
Thank you so much to Trisha for her Inspirational guidance.



Lantern



Fairy Doors



Pictures from nature



**Children  
First**

## Children First Awareness



An Roinn Leanaí, Comhionannais,  
Michumais, Lánpháirtíochta agus Óige  
Department of Children, Equality,  
Disability, Integration and Youth

Week Children First Awareness Week took place from 1st to 7th November 2021. Children First promotes the protection of children from abuse and neglect, by setting out what individuals and organisations need to do to keep children safe, and how to deal with concerns about a child's safety or welfare.

Society has a duty of care towards children, and everyone should be alert to the possibility that children they are in contact with may be abused or at risk of abuse or neglect. If you are concerned about a child you should contact the Tusla Social Work Department, details may be found here - <https://www.tusla.ie/services/child-protection-welfare/contact-a-social-worker/>

Under the Children First Act 2015, certain people who work with children have additional legal obligations. These are known as Mandated Persons.

If you are a Mandated Person, you are obliged to report to Tusla Social Work Department any knowledge, belief, or reasonable suspicion that a child has been harmed, is being harmed or is at risk of being harmed.

Organisations classed as providers of relevant services under the Children First Act 2015 are required to complete a risk assessment and must have a Child Safeguarding Statement in place.

More information on keeping children safe in our communities is available at [gov.ie/childrenfirst](http://gov.ie/childrenfirst) and at the Early Learning and Childcare National Child Safeguarding website, [here](#)



## Early Years Education Inspection Programme

In September 2021, Circular 0044/2021 was published to detail the inspection plans for the academic year 2021/2022. This can be accessed online :

<https://assets.gov.ie/195564/18f039ff-e0bc-44a2-b161-f957e18365b0.pdf>

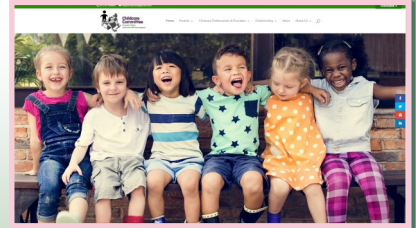
**Guide to Early Years Education Inspections. [Download here](#)**





### Advertising

For any services wishing to advertise on Sligo CCC [Facebook page](#), please ensure the image is in either JPEG, BMP, PNG, GIF, or TIFF format.



For Job placements on our dedicated website [page](#), documents in Word format are required



### Co-payment tool webinar

Training webinar on the new co-payment tool on the Early Years Hive.

Click on the follow link to view the webinar

<https://register.gotowebinar.com/register/4262842184107219728>

### Ecce Minimum Number exemption process

- **Service Providers sign in onto Hive and download the [ECCE Minimum Numbers Exemption Form 2021-22](#)**
- **Once the form has been completed, email a copy to [sligochildcare@gmail.com](mailto:sligochildcare@gmail.com)**
- **Following a successful review, Sligo CCC will sign and stamp the completed form and email it to the service provider**
- **Service Providers sign in onto Hive**
- **Click in Requests -> click in New Request -> Option ECCE Minimum Exemption**
- **Upload the ECCE Minimum Exemption form (signed and stamped by their local CCC) for Pobal review.**



### Ecce Fee Lists 2021

Sligo CCC reviewed and approved 65 Ecce fee lists for the 2021-2022 programme year and we would like to thank all the participating services in their cooperation





**NCS and CCSP: End-of-year maintenance**



As it is coming up to the Christmas holidays and the end of 2021, it may be necessary to make important changes on your Early Years Hive portal for NCS and on your PIP portal for CCSP.

### **NCS Service Calendar (adding closures)**

If your service is closed over the Christmas and New Year's period, you must mark the closures on your NCS service calendar on the Hive accordingly - this must be done in advance of the Christmas period, NCS calendars cannot be adjusted retrospectively. You must also note whether it is a subsidised (paid) closure or not. Services are entitled to up to 10 subsidised closures per programme year.

For guidance on adding closures to your NCS service calendar, please see the 'How to add a Closure' heading of the [NCS Service Calendar Guide](#) on the Hive

Note: If your closure is a paid closure, you must add each day of the closure individually, as there is no option on the Hive portal to mark the closure as paid if you enter it as a period, the option is present when adding single days only.

### **NCS Non-Term Hours**

Non-Term hours can be used to cover the Christmas period for childcare needs when schools/ECCE are closed. When Non-Term hours are added to an NCS claim, the parent receives a notification on their portal and needs to be confirmed by them for them to come into effect. For guidance on adding Non-Term hours to NCS claims, please see the 'How to add Non-Term hours to an NCS claim' heading of the [NCS Child Registration Guide](#) on the Hive.

Remember: if you are using the attendance tracker available on the Hive [HERE](#), for Non-term weeks you will need to update the 'NCS hours claimed' column with the child's Non-Term hours. This will ensure that the tracker will generate alerts correctly against their attendance. You will need to revert to their term hours when term resumes.

Important: Changes cannot be made to service calendar opening hours or claimed hours once a return for that week has been submitted on the Early Years Hive.



## NCS Weekly Returns

As per the [NCS Funding Agreement 2021-22](#), NCS returns must be submitted on the Early Years Hive each week. Returns become available from the last day (Sunday) of the reporting week and must be completed by the following Tuesday and are based on the previous week's attendance.

If a return is not submitted within the required timeframe, all subsidy payments will be suspended until it is submitted. All service providers should ensure any outstanding returns are submitted before the end of the year. For guidance on returns, please see the [NCS Attendance Returns Guide](#) on the Hive.

If your service is closing over Christmas, returns for these weeks still must be submitted. If you are unable to submit returns during a closure period, please see the below section on Bridging Payments.

## NCS Bridging payments

A 'Bridging Payment' is available to service providers during periods of subsidised closure, if they are unavailable to submit their weekly NCS return i.e., Christmas holidays, mid-term breaks, etc.

When submitting the NCS return that is two weeks before the subsidised closure period, the Hive recognises the closure coming up and asks the following: *"You have an upcoming closure, do you want to request a Bridging Payment for the dates from "X" to "Z"? (Yes/No)"*

If Yes is selected, the payment is made during the week the service is closed i.e. when they are unable to submit their returns. The service must then submit "Fast returns" for this period when they return after the closure.

For guidance on returns, please see the [NCS Attendance Returns Guide](#) on the Hive.

## NCS unconfirmed claims

NCS subsidies can only be paid once an application has been successfully completed, the CHICK has been registered with the childcare provider and the parent has confirmed on their portal that all details are correct. Please review any unconfirmed claims for your service and request parental confirmation from applicants who availed of a subsidised NCS place.

For payments to flow, all claim weeks for a child must be confirmed. Therefore, a registration will display "No" under the Parent Confirmed field until all claim weeks have been confirmed. Where a registration is displaying "No" it may be that there is an older claim still awaiting parent confirmation. Parent confirmation only changes to 'Yes' when the parent has confirmed all of the claims for the child.

## CCSP: Amending Sessions (e.g. if a child is changing levels of service over the Christmas period)

As in previous years If the registration is changing re level of service and needs to be updated, please input a CCSP Leaver with the date the child is changing service level. A new registration should then be created with the updated level of service for the appropriate period. Please see pages 14/15 of the below Registration Guide on PIP Resource:

[CCSP 2021-2022 Registrations How to Guide](#)

•





Gaeilge

Parents Providers AIM Supports How to Apply FAQs News Resources Contact



## The Access and Inclusion Model

Learning and playing together

[I'm a parent](#)

[I'm a provider](#)

### Who we are

The goal of AIM is to create a more inclusive environment in pre-schools, so all children, regardless of ability, can benefit from quality early learning and care. The model achieves this by providing universal supports to pre-school settings, and targeted supports, which focus on the needs of the individual child, without requiring a diagnosis of disability.

AIM commenced in 2016, since then, it has helped tens of thousands of children with a disability to access and meaningfully participate in the ECCE programme in pre-school settings nationwide. The model has been recognised internationally and has won awards for both excellence in practice, and inclusive policy.

AIM for [Parents](#)

AIM for [Providers](#)



### **Isolation quick guide - Adults and children from their 13th**

To view the latest Isolation guidelines from the Health Protection Surveillance Centre, click on the following [link](#)





## *Resumption of Onsite Compliance Inspections*



As you are aware, due to the emergence of COVID-19 in March 2020 and the subsequent public health advice, onsite compliance inspections at ELC/ SAC settings were suspended. The compliance/verification approach was temporarily revised to allow compliance to proceed while restrictions remained in place and, as per communication issued to service providers on 12/11/2020, desk-based checks are currently being carried out by compliance staff in Pobal.

Following the recent public health advice regarding the easing of restrictions, onsite compliance inspections will resume for the DCEDIY funded services from the week beginning the 15/11/2021. Inspections will commence initially with the NCS & inspections on other schemes to follow

As an interim measure, onsite visits will be announced visits and the Primary Authorised User as per the Hive for selected services, will receive an email at least 2 days in advance of a scheduled onsite inspection. We will provide advance notice of the resumption of unannounced visits, which were the norm for Inspections prior to COVID-19.

The following compliance guidance documents have been revised for the 2021/2022 programme call and are available on the Hive under the NCS documents section:

[NCS Compliance Checklist](#)  
[NCS Compliance Service Provider Guide](#)  
[NCS Post Inspection Rectification Actions](#)

Further guidance on ECCE & Savers compliance onsite checks will be issued in due course and in advance of any compliance checks on these schemes for the 2021/2022 programme cycle.

The Authorised / Visit Officers will adhere to public health guidance while onsite at Early Years and School Age Childcare facilities. We want to take this opportunity to thank services in advance for their continued co-operation with compliance checks.

To View the Compliance Webinar go to the following link to register

<https://register.gotowebinar.com/recording/1521191245098183440>







## Winter ECCE payment schedule



An Roinn Leanaí, Comhionannais,  
Míchumais, Lánpháirtíochta agus Óige  
Department of Children, Equality,  
Disability, Integration and Youth



### ECCE PAYMENT SCHEDULE 2021 / 2022

Payment	Week	Start Date	End Date	Details	Payment Date	Notes
4	14	22/11/2021	26/11/2021	Maximum 6 weeks: Based on registrations to 31/12/2022	19/11/2021	Christmas Holidays 26/12/2021 - 06/01/2022
	15	29/11/2021	03/12/2021			
	16	06/12/2021	10/12/2021			
	17	13/12/2021	17/12/2021			
	18	20/12/2021	24/12/2021			
	19	27/12/2021	31/12/2021			
5	20	03/01/2022	07/01/2022	Maximum 4 weeks: Based on registrations to 28/01/2022	Friday 07/01/2022	
	21	10/01/2022	14/01/2022			
	22	17/01/2022	21/01/2022			
	23	24/01/2022	28/01/2022			
6	24	31/01/2022	04/02/2022	Maximum 5 weeks: Based on registrations to 04/03/2022	28/01/2022	February Mid Term 21/02/2022 - 25/02/2022
	25	07/02/2022	11/02/2022			
	26	14/02/2022	18/02/2022			
	27	21/02/2022	25/02/2022			
	28	28/02/2022	04/03/2022			



### Tusla information: [Webinars and other resources for providers](#)

On 29 September, we hosted a webinar entitled 'What to expect from an Early Years Inspection'. The webinar provided an overview of an Early Years inspection process from start to finish. It was attended by almost 200 professionals from ELC settings, and, like all our webinars, it was recorded and will soon be available to view on our website.

You can view this and all our webinars on the webinar section of our website. The webinars currently on the site have now been viewed more than 2,000 times.

In addition to the webinars there are a wide range of other resources and tools designed to support ELC settings in the Resources section; these include extensive information about the Quality & Regulatory Framework and the fully revised Question & Answer document. We are in the process of revamping and updating all sections of the [Early Years web pages](#) and we will soon be issuing a short questionnaire seeking your views on how we can make the pages as useful and easy to use as possible.

### Quality and Regulatory Framework (QRF) eLearning

You can access all six modules of our QRF eLearning programme [via our website](#).

We now have more than 10,000 registered users across the system, which is a testament to the commitment and professionalism of ELC providers and practitioners. If you have not yet completed all six modules, we strongly encourage you to do so





*Aistear* The Early Childhood Curriculum Framework is being updated and you have an opportunity to contribute. The National Council for Curriculum and Assessment (NCCA) are holding a consultation with parents & ELC providers,

Including online consultation seminars, questionnaires for parents and ELC providers & the opportunity to make a written submission.

A short video explaining the process and links to all the information you need are provided below.

- A short information video: [Aistear 2021 with ISL.mp4 on Vimeo](#)
- A [Link](#) to NCCA webpage for updating *Aistear*
- Links to the online questionnaire, one for [professionals](#) and one for [parents / guardians](#)
- A [Link](#) to a form to register an interest in attending a consultation event.



[Budget 2022 Overview and FAQ \(updated\)](#)

[for Early Learning and Childcare Providers](#)

[17 November 2021](#)

<https://www.sligochildcare.ie/budget-2022-faqs-for-providers/>

**Budget 2022**

**Overview and FAQ (updated) for Early Learning and Childcare Providers**

**17 November 2021**

*(Please note that updated material is highlighted)*





### First 5 Little Library Initiative

The second stage of the Little Library initiative was launched on Friday the 19<sup>th</sup> of November by Minister O’Gorman. This launch saw reading materials made available to approximately 200,000 children.

First 5 Little Library book bags are available to Early Learning and Care and School- Age Children services from libraries throughout Sligo to support children’s early language and literacy development.

Has your service picked up their bag?

Has your early learning and care setting picked up a Little Library bag from the library yet?

Libraries Ireland  
Government of Ireland  
Right to Read at your Library  
Rialtas Áitiúil Éireann  
Local Government Ireland

First 5 Little Library

Sligo Libraries can be contacted on 071 9111850 or email [sligolib@sligococo.ie](mailto:sligolib@sligococo.ie) Parents of babies and young children are also encouraged to join Sligo Libraries. They can do so free online at [www.sligolibrary.ie](http://www.sligolibrary.ie) if they are not already a member.

### Investing in Children

The Investing in Children Membership Award™ recognises and celebrates examples of imaginative and inclusive practice. Investing in Children members are those services that can demonstrate a commitment to dialogue with young people that leads to change. Tusla is working in partnership with IiC™ to provide a quality assurance mark, ensuring that the collective voice of children and young people is embedded in rights based practice.

Has your service or organisation engaged in dialogue with children and young people?  
Has this led to a change?

If so, why not apply for the Investing in Children Membership Award™ to achieve national recognition for your participatory practice. Register your interest or have an initial discussion by contacting your regional Participation and Partnership Officer, [claire.redmond1@tusla.ie](mailto:claire.redmond1@tusla.ie)





### ***Learner Fund Graduate Bursary Payments***

The Department of Children, Equality, Disability, Integration and Youth (DCEDIY) re-opened the Learner Fund Bursary to Early Learning and Care practitioners who are new graduates of a recognised Early Childhood Education and Care degree programme. Sligo County Childcare Committee would like to thank all who applied and we can confirm that 7 applications were approved.

### ***FAR Reimbursement Fund***

To support services to meet their regulatory requirement of having one staff member trained in First Aid Response (FAR) by November 2021; the Department of Children, Equality, Disability, Integration & Youth (DCEDIY) had extended and altered the FAR Reimbursement Fund which will fund one FAR first aid training place per registered early learning and care services / registered childminders to a maximum of €225 per full course or €175 per refresher course. Sligo CCC approved 6 applications.

## **Parent & Toddler Grants**

Parent & Toddler Groups receive funding to support their work within communities. Funded by the The Department of Children, Equality, Disability, Integration and Youth and Pobal, Sligo County Childcare Committee are delighted to announce that € 3,000 in funding has been allocated to 4 Parent & Toddler groups in County Sligo.

This year we also had the pleasure of funding 1 new Group.

SCCC would like to congratulate these Parent & Toddler groups, and acknowledge the effort that went in to preparing the applications.





## Newsletter Christmas 2021

**Meitheal**

A TUSLA led national practice model

Dear Colleagues,

I am sure by now everyone is looking forward to a well deserved Christmas break after another year which demanded much flexibility, energy and emotional reserves. Wherever you are, I hope you can all enjoy a restful Christmas time.

2021 was an incredibly busy year for the Meitheal service in Sligo and Leitrim. A huge thank you to all of the Early Learning and Care and School Age services who have participated in Meitheal process for families especially those and who have supported families in Meitheal to access childcare through a TUSLA sponsor referral in the National Childcare Scheme. It is truly wonderful to see the difference attending an Early Learning and Care or school age service can make to a child and families life.

This year, families requested a Meitheal for a broad range of reasons, including addiction, social isolation, behavioural issues, additional needs, bereavement, emotional regulation, educational attendance, relationship difficulties, anxiety, housing and financial issues, previous domestic violence and parental separation.

Meitheal can help by coordinating the services involved with the family, allowing a space for the families together with the services supporting them to work together to improve outcomes for children. Meitheal can also help identify services that can further support the family and with a parent's permission, invite them to the Meitheal.

As always, if you wish to support a parent requesting a Meitheal for their child the "Meitheal request forms" can be found on the TUSLA website <https://www.tusla.ie/services/family-community-support/guidance-documents/>. Once filled out with a parent the request form can be posted to the following address:

Meitheal Office  
Prevention, Partnership and Family Support

Tusla, Child and Family Agency  
Tusla office  
Floor 1, Unit 4  
Shannonside Retail Park  
Dublin Road  
Carrick on Shannon  
Co Leitrim  
N41 HE40

Tel: 071 9657800 or mobile 087 656 2844.

Email: [meitheal.ppfs@tusla.ie](mailto:meitheal.ppfs@tusla.ie)

Wishing you all a very Happy Christmas and peaceful and healthy 2022.

Warm regards,

*Karen Folan*

0867978513





## Parent Hub Coordinator

The Parent Hub Sligo Leitrim had a busy year with a range of different Parenting support and training courses taking place.

Firstly, one of the highlights of 2021 was the successful completion of a series of Parent Support Podcasts which you will find on our

[Parent Hub Sligo Leitrim Facebook page](#) or alternatively you can contact Lisa the Parent Hub Coordinator on

[parenthubcoordinator@sligochildcare.ie](mailto:parenthubcoordinator@sligochildcare.ie) and I will forward you the link to the Podcasts.

These podcasts are funded under Healthy Ireland and the Department of Children, Equality, Disability, Integration and Youth which is supported by Pobal.

Another exciting project that has been undertaken in 2021 is the Sligo/Leitrim Parent Support Strategic Plan 2022-2026. This is an excellent piece of work and the aim of it is seeking to ensure that every door is the right door for those in a parenting role.

Please keep an eye on our social media for the launch of this exciting strategic plan, which will take place in the first quarter of 2022. We publish a Bulletin every second month with the inclusion of upcoming parent training and support courses within the



Sligo/Leitrim areas and this is a great resource or information.

This can be viewed on our social media platforms, however if you do not have access to social media please feel free to email Lisa for a copy of the Bulletin for any enquiries you may have.

Wishing you all a very Merry Christmas and a Happy New Year.

Warm Wishes,

*Lisa Nicholson*

Parent Hub Coordinator

087 7391569





---

## Work Placement Experience Programme – Employers

### Description

The [Work Placement Experience Programme](#) (WPEP) is a work experience programme for jobseekers in receipt of a qualifying social welfare payment and who have been unemployed for six months or more. It aims to provide jobseekers who have never had a job or who have lost employment with an opportunity to gain meaningful work experience. Placements will provide Participants with training, upskilling and work experience in a new work role where they have had no prior experience in the past 18 months that will further enhance their potential for progression and to re-engage with the job market. The programme seeks to equip participants with relevant work and personal development skills in a supportive environment while on a work placement, with a view to increasing their employment prospects.

Participation on the WPEP is entirely voluntary. There will be no financial penalty on social welfare payments for non-participation.

### Objectives

The key objectives of the WPEP are:

Keep jobseekers close to the labour market.

Provide jobseekers who have never had a job with the opportunity to gain valuable work experience and training to assist them to gain employment.

Provide jobseekers who wish to change careers with the opportunity to gain quality work experience in a new employment role.

Facilitate employers to contribute to the national activation agenda by providing work placement opportunities to jobseekers.

### What the Work Placement Experience Programme is

The Work Placement Experience Programme (WPEP) is a 6-month, 30 hour per week voluntary work experience programme. The programme is for jobseekers that are currently getting a qualifying social welfare payment and who have been unemployed for six months (156 days) or more.

The weekly rate of payment is €306. See the qualifying list in the [next section](#).



An Roinn Coimirce Sóisialaí  
Department of Social Protection

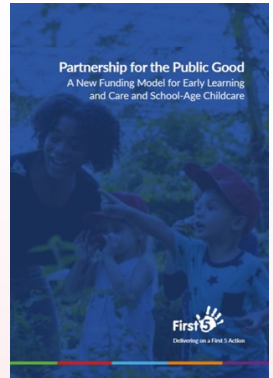




## Recent publications of interest

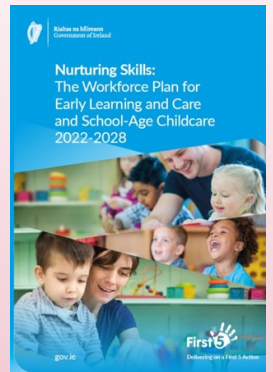
Minister O’Gorman launches major reform of funding for Early Learning and Childcare following report of Expert Group. See link for more details

[gov.ie](http://www.gov.ie) - [Minister O’Gorman launches major reform of funding for early learning and childcare following Report of Expert Group \(www.gov.ie\)](http://www.gov.ie)



The Minister also launches Nurturing Skills: The Workforce Plan for Early Learning and Care and School Age Childcare (2022—2028)

[gov.ie](http://www.gov.ie) - [Minister O’Gorman launches Nurturing Skills: The Workforce Plan for Early Learning and Care and School-Age Childcare \(2022 – 2028\) \(www.gov.ie\)](http://www.gov.ie)



## OECD Publication - Strengthening Early Childhood Education and Care in Ireland: Review on Sector Quality

This OECD review makes a number of recommendations on ELC in Ireland in the areas of governance and funding, workforce development, and quality assurance and improvement.

- The report can be accessed here: [Strengthening Early Childhood Education and Care in Ireland : Review on Sector Quality | OECD iLibrary \(oecd-ilibrary.org\)](https://oecd-ilibrary.org)
- The video launch of the report with Andreas Schleicher (OECD Director for Education and Skills) and Roderic O’Gorman TD (Minister for Children, Equality, Disability, Integration and Youth) is available here: [https://www.youtube.com/watch?v=o\\_k6Dsb6Hi8](https://www.youtube.com/watch?v=o_k6Dsb6Hi8).



An Roinn Leanaí, Comhionannais,  
Míchumais, Lánpháirtíochta agus Oige  
Department of Children, Equality,  
Disability, Integration and Youth







An Roinn Leanaí, Comhionannais,  
Míchumais, Lánpháirtíochta agus Oige  
Department of Children, Equality,  
Disability, Integration and Youth

## National Covid-19 Support Helpline for ELC and SAC providers

If you are a childcare provider and/or a childminder and need out of hours support in relation to a suspected or confirmed case of Covid-19 in your childcare service please contact

**1800 940341**

This support line is available only  
**Saturdays/Sundays and Bank holidays**  
from 10am - 1pm and 1.30pm - 4pm



Coronavirus  
**COVID-19**  
Public Health  
Advice

The National Covid-19 Support Helpline for ELC & SAC providers will be operating on the weekends up until the 20th of December 2021. The Covid-19 helpline will not be open on Christmas Day, Stephen's Day or New Year's Day but will open again for the 2nd and 3rd of January 2022 to support ELC/SAC services in reopening after the Christmas break. ELC/SAC providers can contact the HSE dedicated line: **01 511 977** for support with Covid-19 positive cases in services between Christmas and New Year.

As SCCC staff are currently operating from home, we can be reached on the following numbers. Our Reception team can still be contacted on 01791-48860

- Joan: 086-7978510
- Viola: 086-7978512
- Suzanne: 086-7978517
- Laura: 086-7978515
- Karen: 086-7978513
- Claire: 089-4566186
- Lisa: 087 7391569



**Childcare  
Committee**

County Sligo

Coiste Cúram Páistí Chonta Shligeach



# All the best!

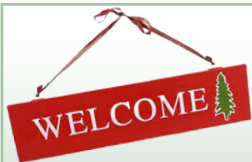


Viola has been working with SCCC since 2006 and has been an outstanding member of the staff team, offering ongoing supports to all Early Learning and Care, Childminders and School Age Childcare services across Sligo.

During her time with SCCC, Viola has built up warm, professional and trusting relationships with everyone she has engaged with through meetings and delivery of information and training sessions.

Viola has shared her wealth of knowledge and experience with everyone from professionals and practitioners working directly with children to Board of Managements and colleagues in other childcare committees and agencies which she came in contact with over the years.

Viola will be missed lots in SCCC, but is leaving in the knowledge that her contributions has supported & enhanced the experiences of children attending early years, school age childcare and childminding services across Sligo.



Sligo CCC would like to welcome Claire Molloy as she is a newly appointed Support and Development Officer with Sligo County Childcare Committee. Claire has a BA Degree in Early Childhood Care and Education from Mary Immaculate College. She has worked in the Early Years sector for over ten years both at home in Ireland as well as internationally, in Australia and the United Arab Emirates. Claire Contact details are [developmentofficer@sligochildcare.ie](mailto:developmentofficer@sligochildcare.ie) & 089 4566186



## Office Closed

*Our Office will be closing for the Christmas break on Wednesday the 22nd of December, If you need to contact us after this date you can reach Joan on 086 7978510.*

*The office will reopen on Tuesday the 4th of January.*

*Merry Christmas and a Happy New Year from all the staff at Sligo*

# Merry Christmas

